

International Shipping Method



In this article, AMR is presenting you the commonly used shipping methods in international relocation world.

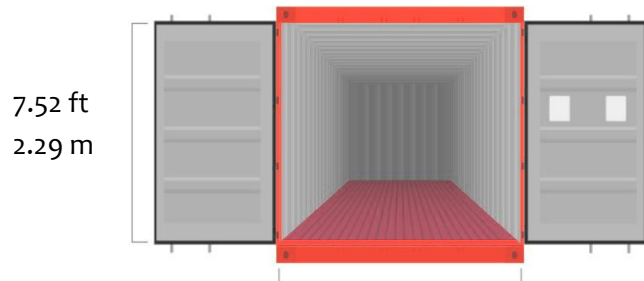
Table of Contents

20-foot Container	2
40-foot Container	3
40-foot-high Container.....	4
45-foot-high Container	5
LCL Shipment	6
Groupage Shipment.....	7
Interesting Container Facts.....	8
Air Shipment Containers.....	9

International Shipping Method


20-foot Container

- ◆ Commonly used in shipping
- ◆ It can contain a 2-bedrooms apartment of all common household goods and personal effects (3 family members)
- ◆ Loading capacity is about 30 cubic meters



7.68 ft
2.34 m

Door Opening Dimension

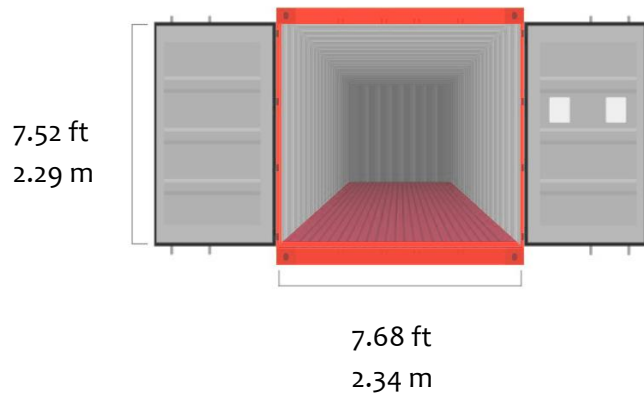


Size	Length	Width	Height
External	20ft(6.06m)	8ft (2.44m)	8.5ft(2.59m)
Internal	19.36ft/(5.9m)	7.64ft(2.33m)	7.71ft(2.35m)

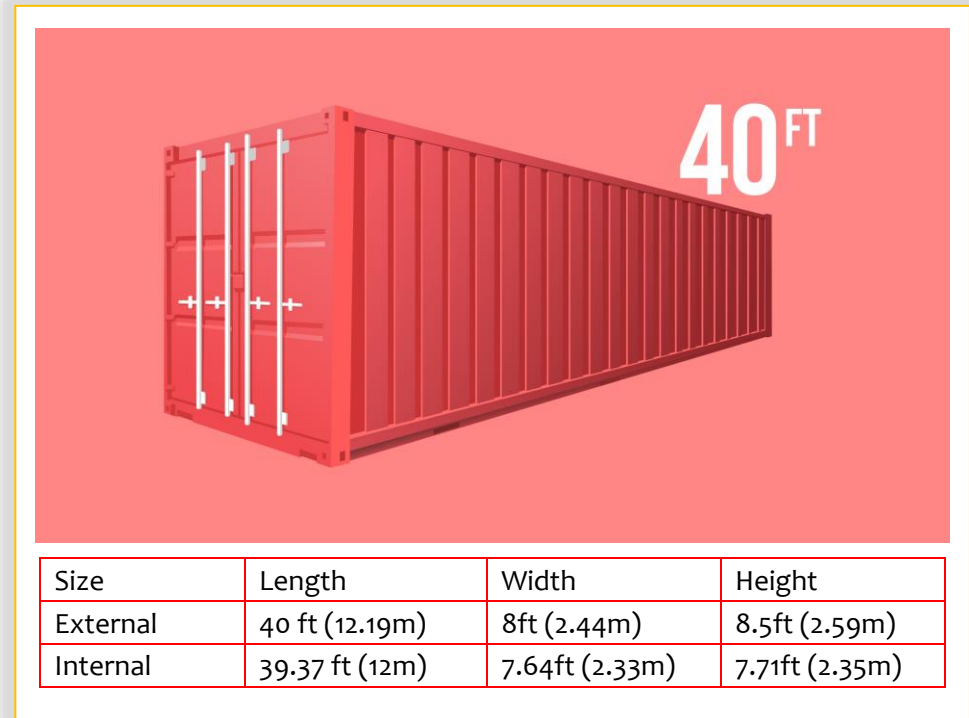
International Shipping Method

40-foot Container

- ◆ Very commonly used in shipping
- ◆ Twice long of one 20ft container
- ◆ It can contain a 5-bedrooms villa of all common household goods and personal effects (5 family members)
- ◆ Loading capacity is about 60 cubic meters



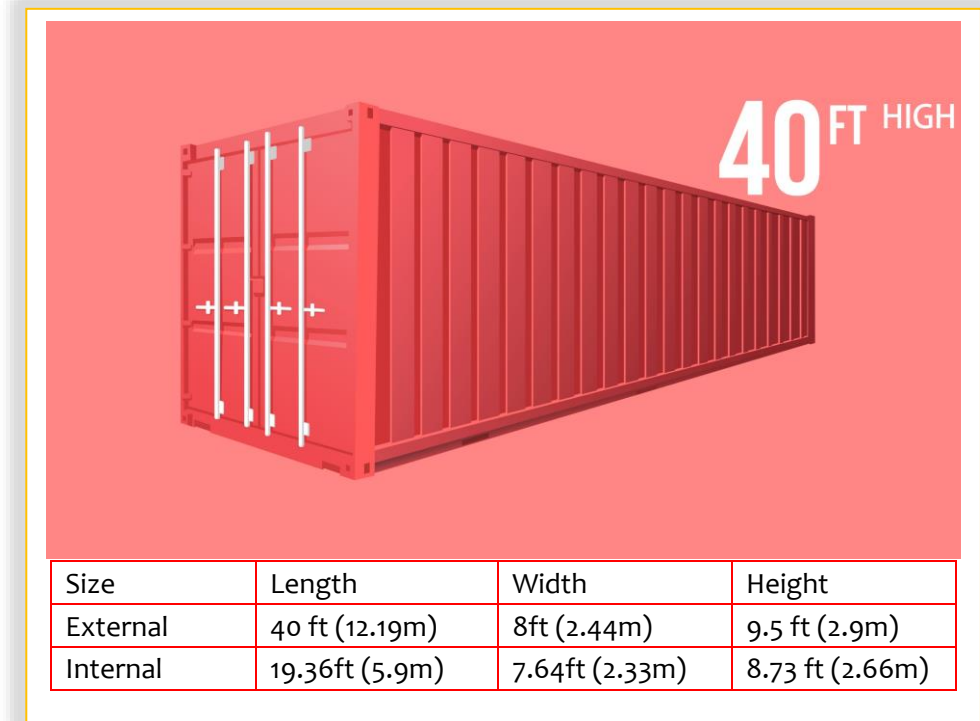
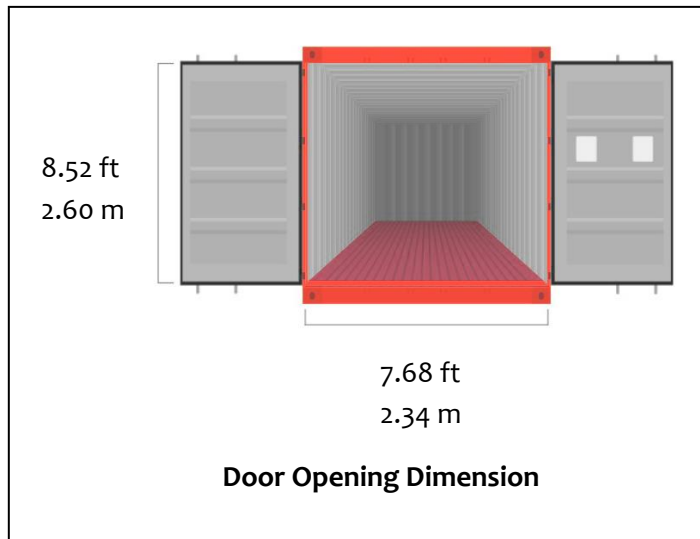
Door Opening Dimension



International Shipping Method

40-foot-high Container

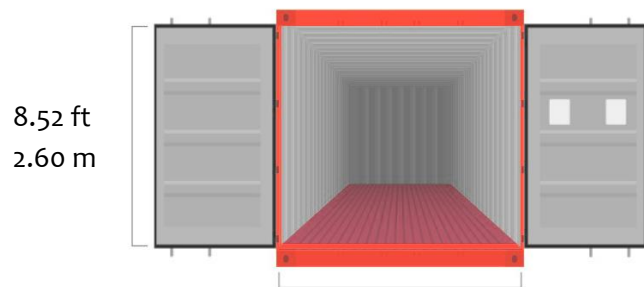
- ◆ It is 1 foot higher than a 40ft container
- ◆ For most routes, expense is the same as 40ft
- ◆ Loading capacity is about 70 cubic meters



International Shipping Method

45-foot-high Container

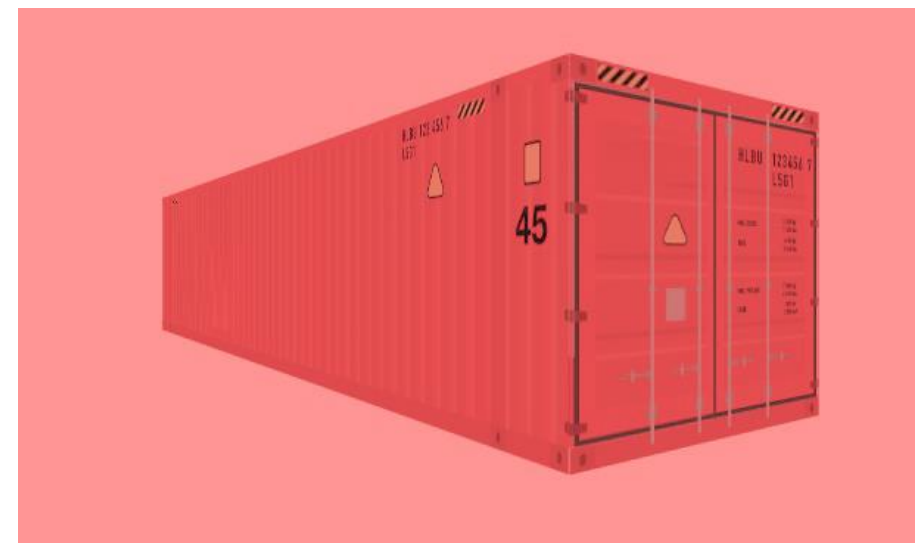
- ◆ It is not commonly used as it is hard for mover to book
- ◆ Loading capacity is about 75 cubic meters



8.52 ft
2.60 m

7.68 ft
2.34 m

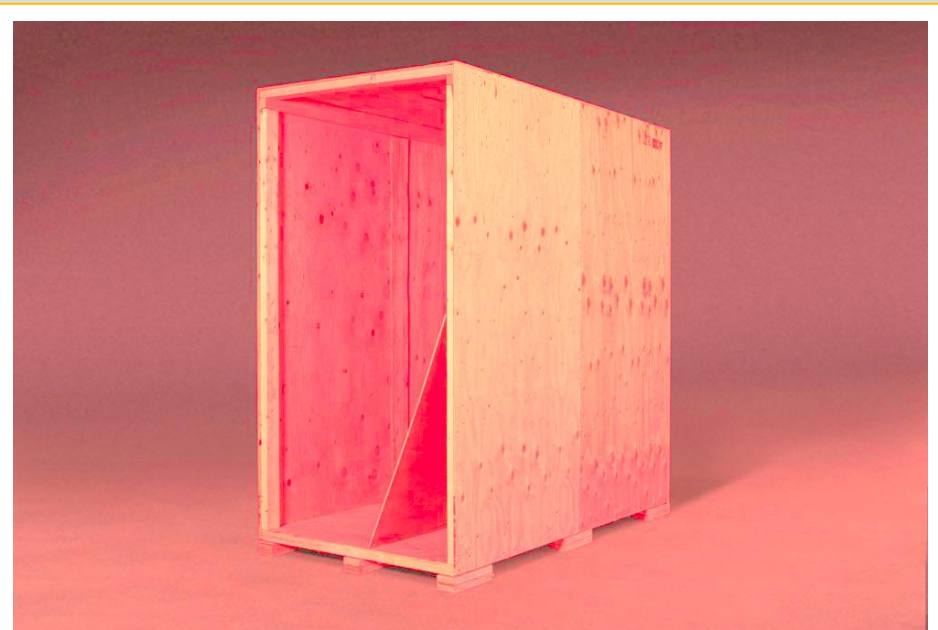
Door Opening Dimension



Size	Length	Width	Height
External	45 ft(13.72 m)	8ft (2.44m)	9.5 ft (2.9m)
Internal	44.42 ft (13.54m)	7.64ft (2.33m)	8.73 ft (2.66m)

LCL Shipment

- ◆ LCL means “Less than Container Load”
- ◆ LCL concept is expressed as opposed to FCL (Full container load)
- ◆ A very small shipment should be consider LCL shipping method (usually less than 10 cubic meters)
- ◆ The mover will book container space from the forwarder
- ◆ Your goods will be loaded in a customerized Lift Van then a container
- ◆ Your goods with Lift Van share the container with other merchandise
- ◆ A LCL shipping is usually more cost-effective than a solo container shipping
- ◆ Shipping frequency and transit time are as same as container shipping

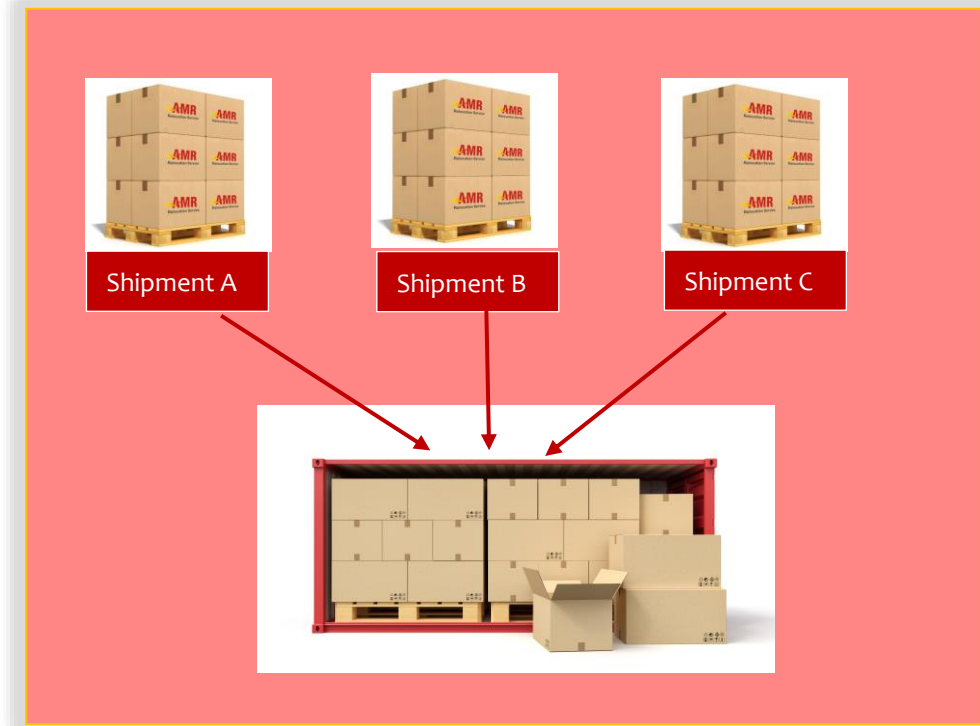


A customized Wooden Lift Van

International Shipping Method

Groupage Shipment

- ◆ Groupage shipment looks like a LCL shipment
- ◆ But it has characters
 - Mover will book the container and has the full control
 - Container will be stuffed with all household goods shipments
 - Shipments should be small (less than 5 cubic meters)
 - Shipments are to the same country
 - Container will not leave until it is fully filled
 - Transit time is much longer
 - Expense is more cost saving than LCL



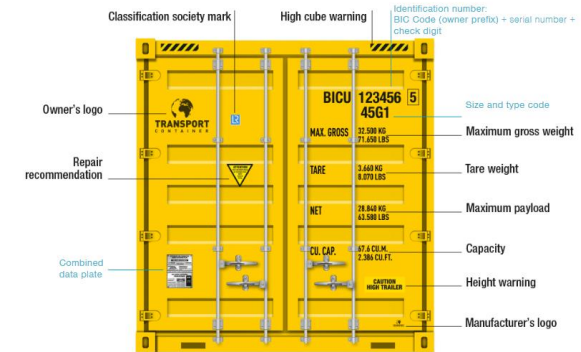
Interesting Container Facts

In 1995 there was an ISO agreement concerning **container marking codes** to depict the **length, height and type of container** in an easy-to-read sequence. This sequence is composed of four letters or digits that commonly appear right under the container identification sequence.

- The first character is related to the length of the container
- The second character is relative to its height.
- The remaining two elements of the sequence identify the container type and characteristics

Generally, container sides are corrugated. In most cases, the corrugation is 1 inch (25mm) thick.

- ◆ The inside width is 2 inches (50mm) less than the externals.
- ◆ Together with 2 inches (50mm) thick doors, the inside length is 3 inches (75mm) less than the external.
- ◆ The height is reduced by approximately 8 inches (200mm). Besides the 1-inch-thick corrugation of the roof, the floor itself is 27mm (1.1 inches) thick, with an underside clearance of 6 inches (150mm).



Length	Height	Type
2 - 20 Feet	2 - 8 Feet 6 Inches	G1 - General Purpose Container
4 - 40 Feet	5 - 9 Feet 6 Inches "High Cube"	R1 - Refrigerated Container
L - 45 Feet		U1 - Open Top Container

International Shipping Method

Air Shipment Containers

- ◆ They are double HD cardboard walls “container”
- ◆ Relocating employee are usually given air containers as the allowance
- ◆ Air shipment is supposed to ship clothes and small possessions
- ◆ We limit furniture and bulky items as they might make air freight not affordable
- ◆ For most personal effects air freight, air chargeable weight = volume by cubic meter times 167

Reach out to AMR if you have further enquiry
cs@amr-relocation.com



E Container

Smallest air Container

Internal size 41x 28.75 x 25.5 inch (L x W x H)

Internal size 104 x 73 x 65 cm (L x W x H)

Internal volume 18 cubic feet=0.51 cubic meters

D Container

Internal size 58x 41 x 45 inch (L x W x H)

Internal size 147 x 104 x 114 cm (L x W x H)

Internal volume 62 cubic feet=1.75 cubic meters



LDN Container

Internal size 54x 54 x 56 inch (L x W x H)

Internal size 137 x 137 x 142 cm (L x W x H)

Internal volume 90 cubic feet=2.67 cubic meters

